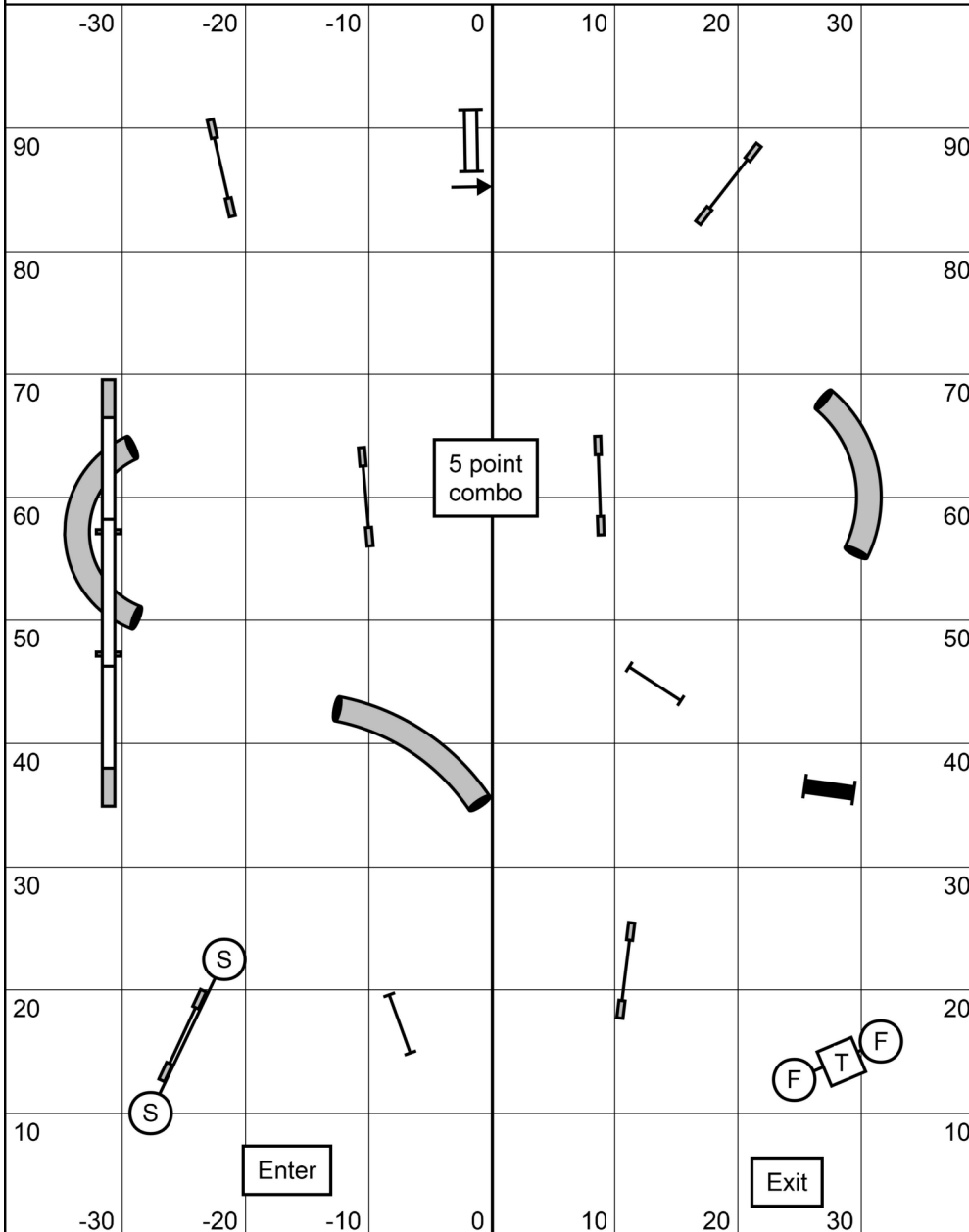


FullHouse 1, 2, 3, 5 & C



To qualify, collect the correct number of points for your dog's level which must include at least:

- 3 1-pt obstacles
- 2 3-pt obstacles
- 1 5-pt obstacles

Obstacle values:

- 1 pt: Single bar jumps
- 3 pts: Tunnels & Panel jump
- 5 pts: Dogwalk, Double & Combo

The Start Jump is bi-directional.

All obstacles may be taken twice for points.

The Table is live at all times and is used to stop the clock.

Point Accumulation Times:

- Small Dogs 35 secs
- Large Dogs 30 secs
- 16" Vets jumping 12" get Large Dog Time

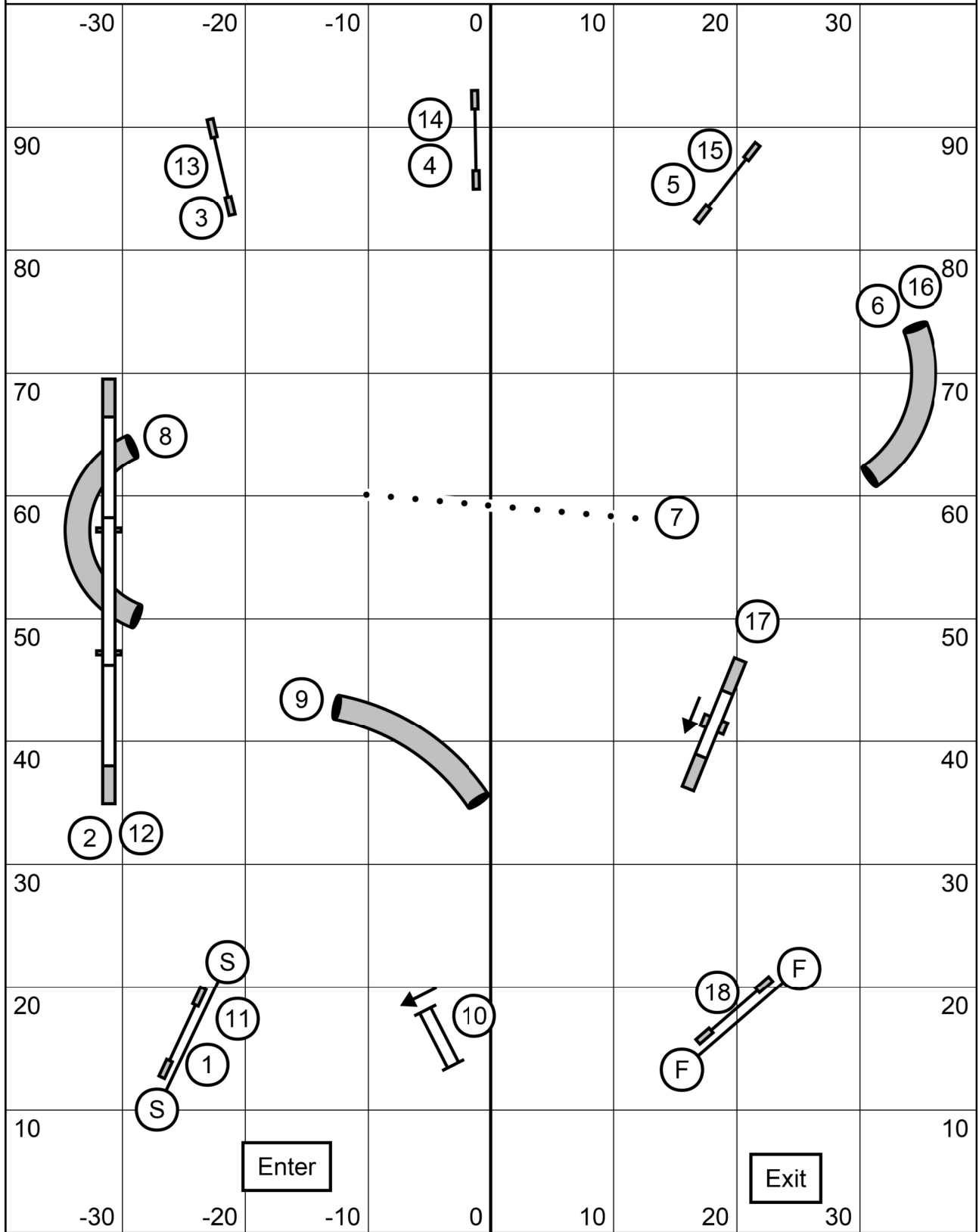
A horn sounds at the end of Point Accumulation time. Your dog has 5 seconds to get to the table after which 1 point will be deducted for each full second over that 5 second grace period.

Points to qualify:

- Level 1 19
- Level 2 21
- Level 3 23
- Levels 5 & C 25
- Specialist & Enthusiasts need 2 points fewer.

FullHouse Levels 1, 2, 3, 5 & C
 Judged by: Joyce Yaccarino
 March 17, 2024
 Flexible Flyers Agility
 Honey Brook, PA

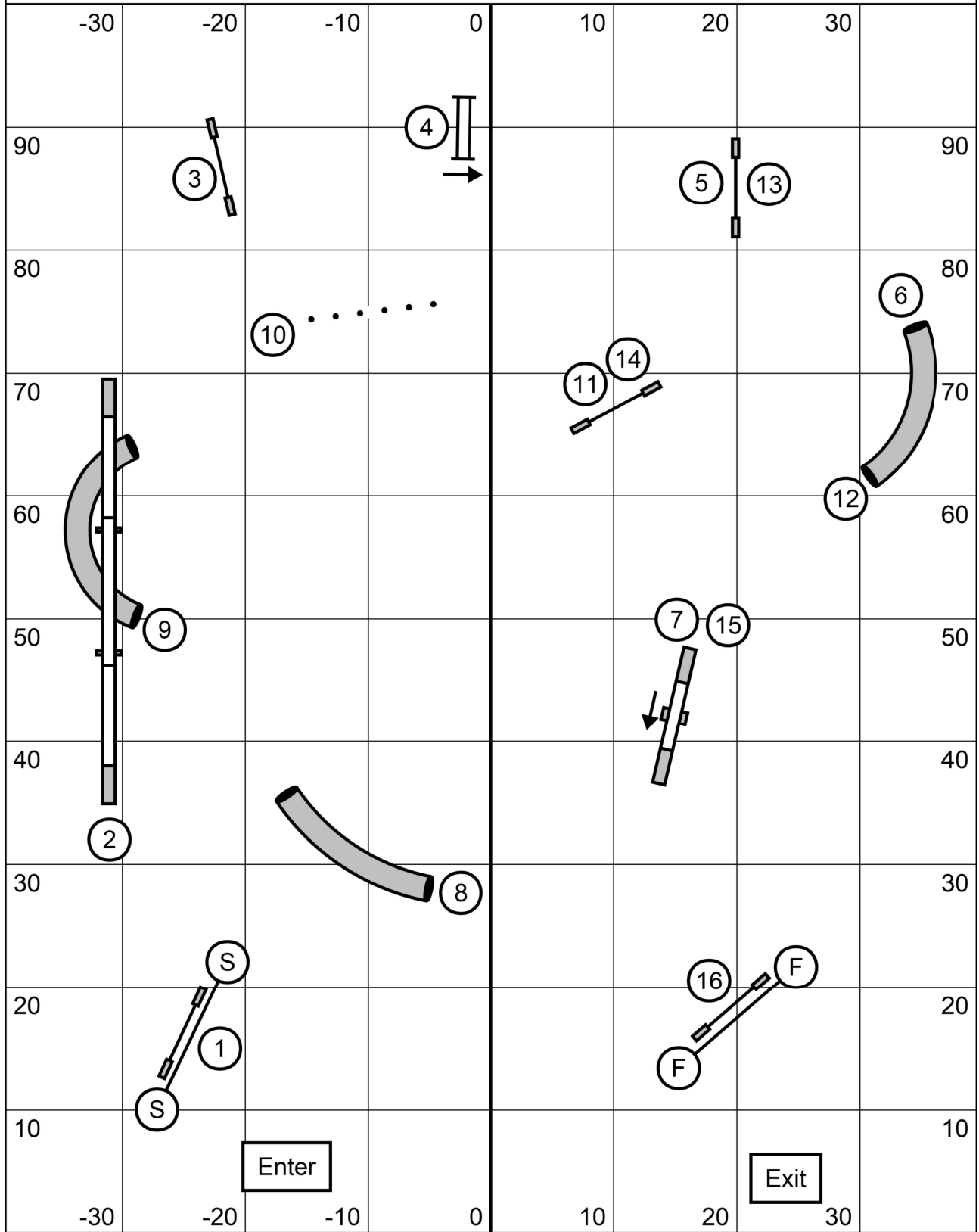
Standard 5 & C



Next dog in at obstacle #16

Standard Levels 5 & C
 Judged by: Joyce Yaccarino
 March 17, 2024
 Flexible Flyers Agility
 Honey Brook, PA

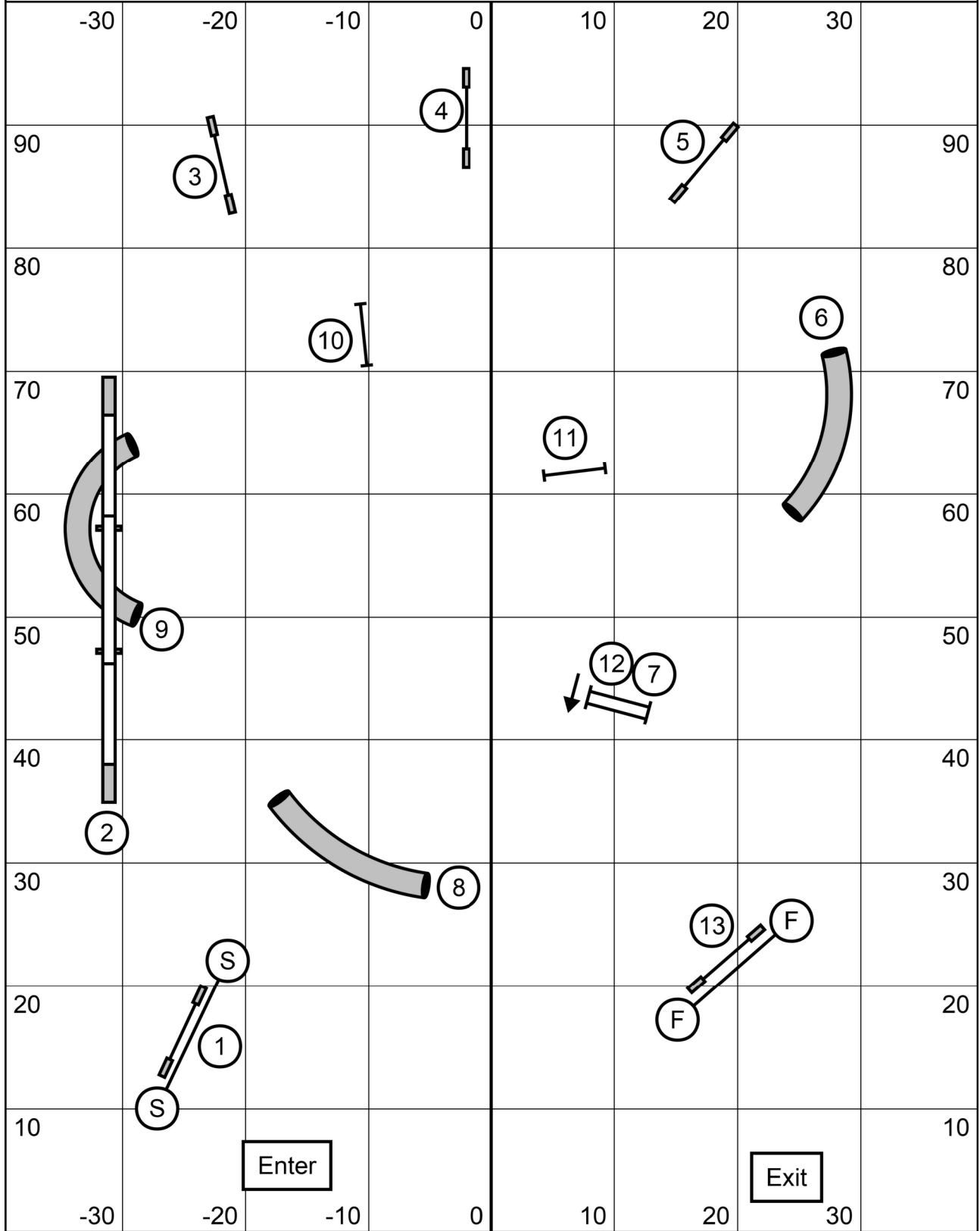
Standard 2 & 3



Next dog in at obstacle #15

Standard Levels 2 & 3
 Judged by: Joyce Yaccarino
 March 17, 2024
 Flexible Flyers Agility
 Honey Brook, PA

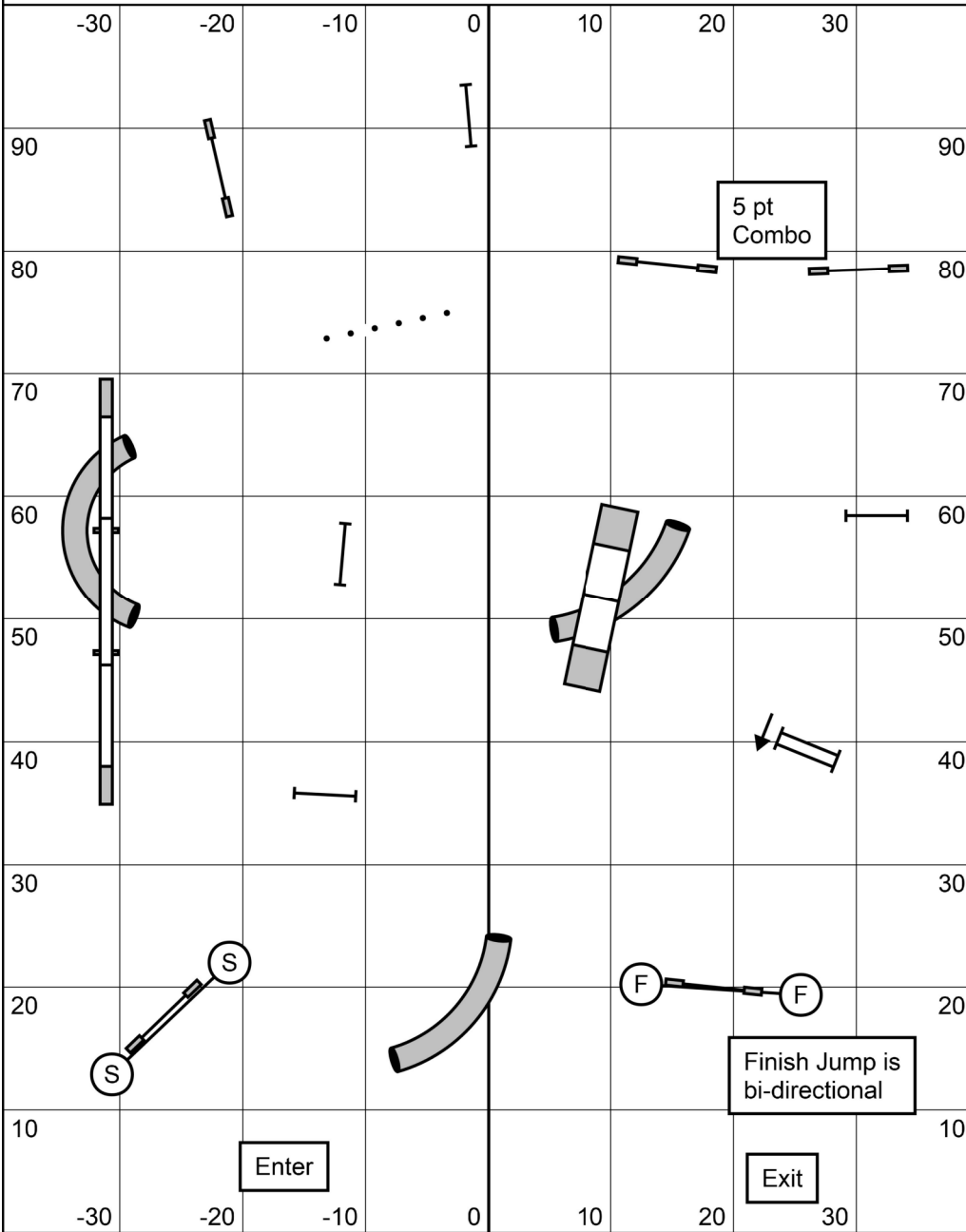
Standard 1



Next dog in at
obstacle #12

Standard Level 1
 Judged by: Joyce Yaccarino
 March 17, 2024
 Flexible Flyers Agility
 Honey Brook, PA

Jackpot 1, 2, 3, 5 & C



Opening

The Start jump is bi-directional. Obstacles may be done twice for points.

Point values:

- 1 pt = jumps
- 3 pts = tunnels, weaves, double
- 5 pts = A-frame, dogwalk, Combo
- 7 pts = Tunnel under Dogwalk 1st time

Closing starts after the 1st horn. The obstacles are reset for points.

To qualify you must pick a **3-LEAF CLOVER** before reaching your **POT GOLD**,

3-Leaf Clover = 3 unique obstacles.

POT OF GOLD = Finish Jump

The call will be 2-4-6 & 8 for the Finish Jump. If you fault an obstacle, your gamble is negated.

Times

4", 8", 12" dogs:
Opening 35 secs, Closing - 20 secs

16" Vets, 16", 20", 24" dogs:
Opening 30 secs, Closing 18secs

To Qualify, teams must complete the Gamble and have the the correct number of overall points for your level. The Gamble is worth 20 pts:

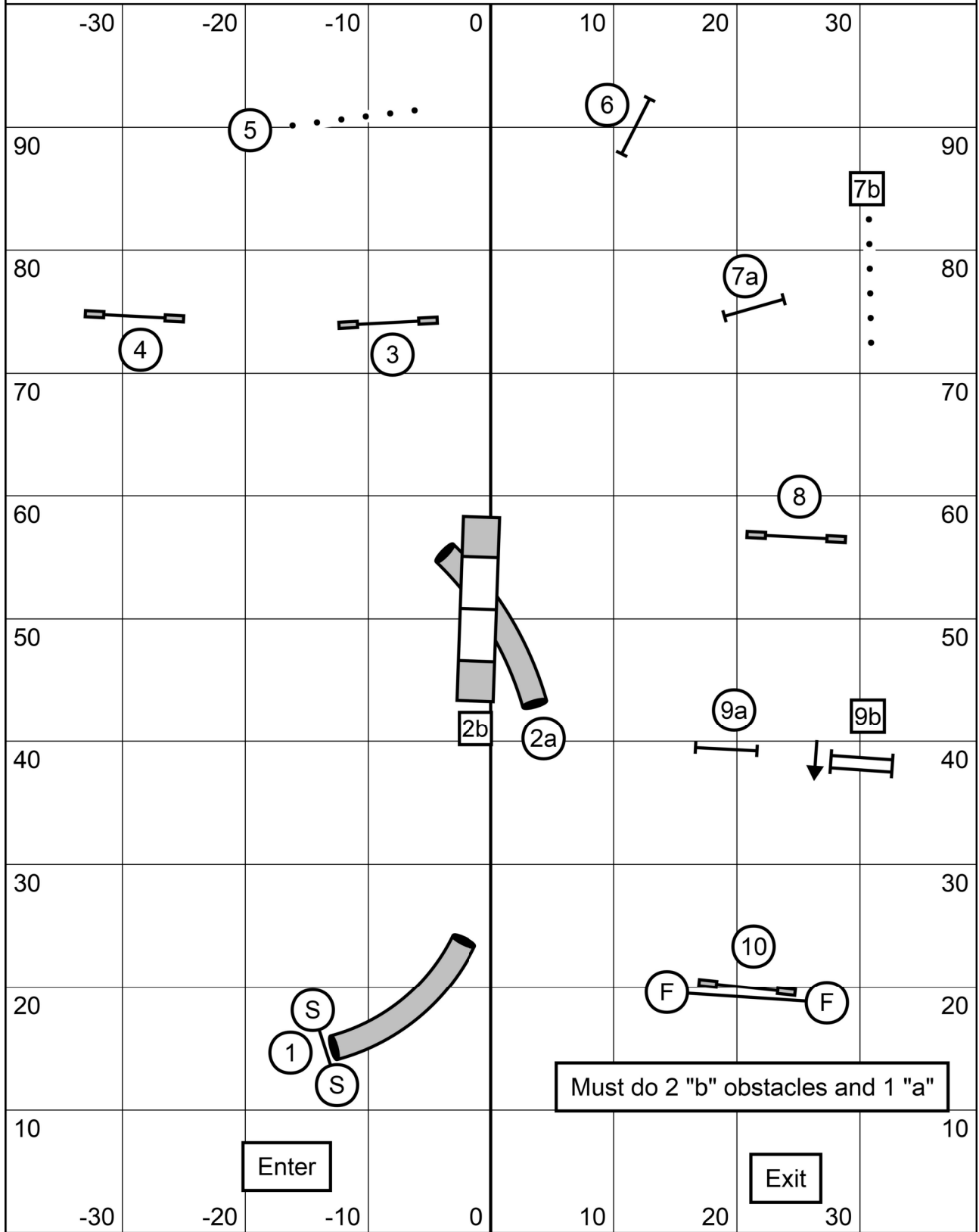
- Level 1 32 pts
- Level 2 36 pts
- Level 3 40 pts
- Levels 5 & C 44 pts

Specialists and Enthusiasts: 2 less pts.

Start Jump is bi-directional

Jackpot Levels 1, 2, 3, 5 & C
Judged by: Joyce Yaccarino
March 17, 2024
Flexible Flyers Agility
Honey Brook, PA

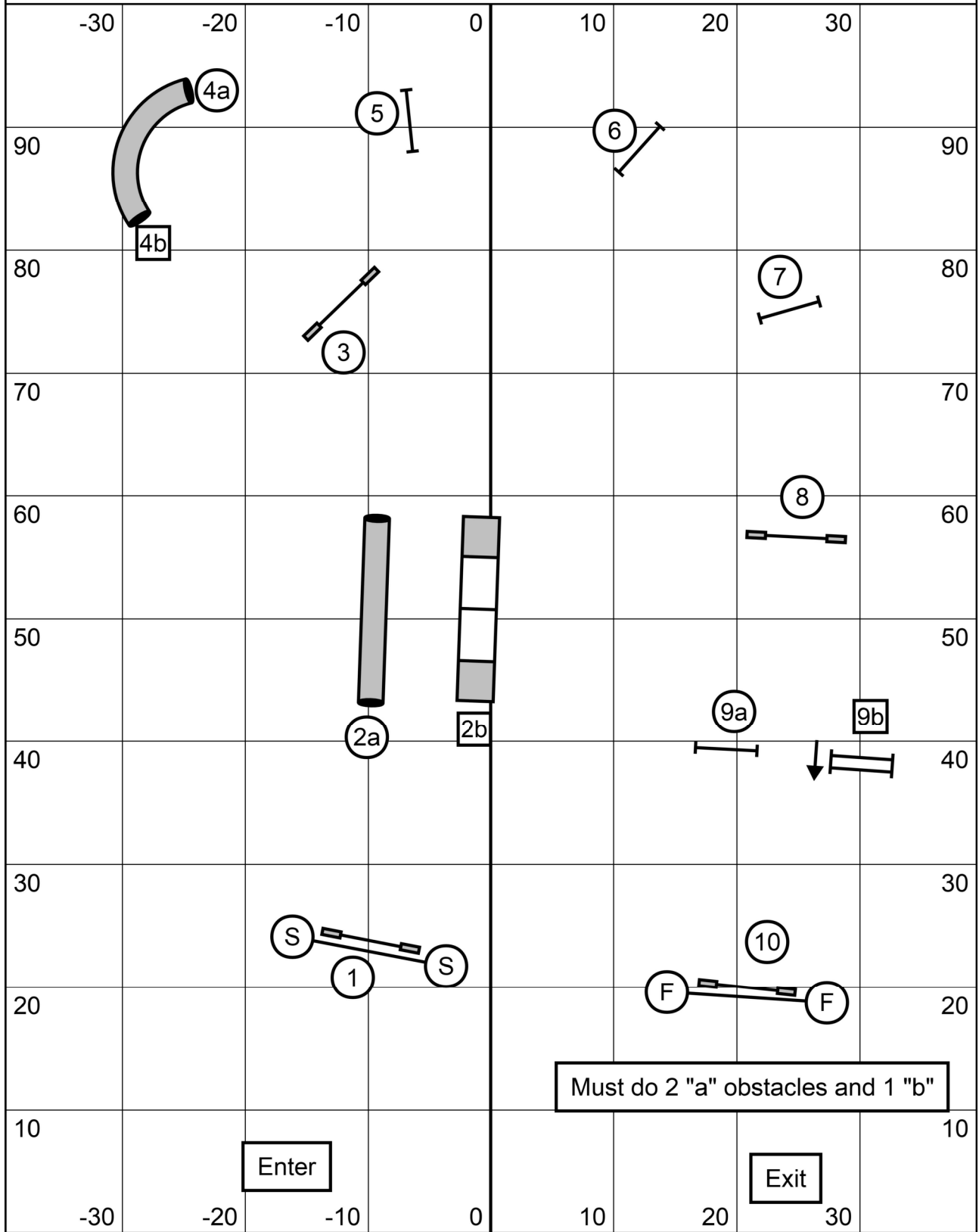
Wildcard 3, 5 & C



Next dog in at obstacle #8

Wildcard Levels 3, 5 & C
 Judged by: Joyce Yaccarino
 March 17, 2024
 Flexible Flyers Agility
 Honey Brook, PA

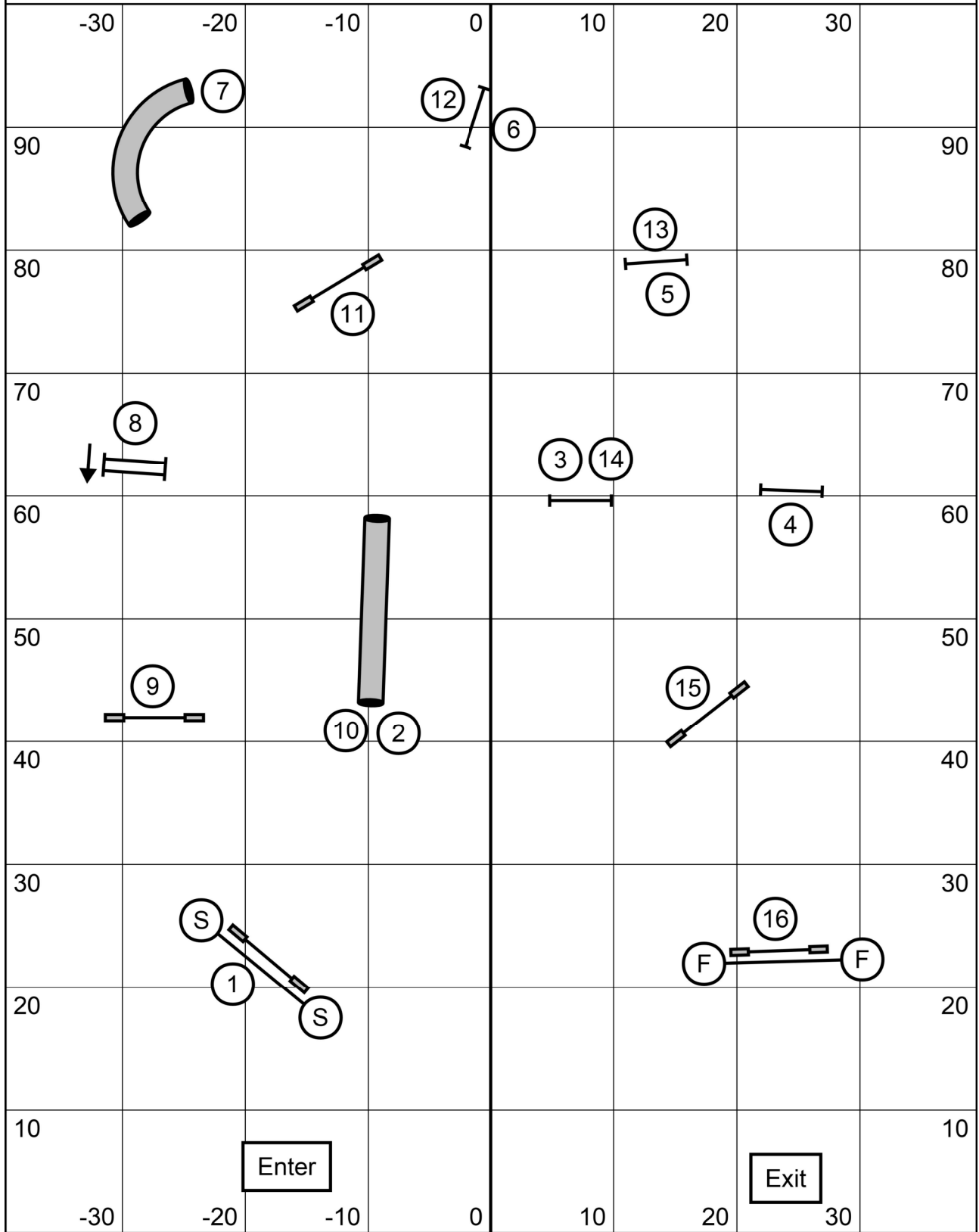
Wildcard 1 & 2



Next dog in at obstacle #9

Wildcard Levels 1 & 2
 Judged by: Joyce Yaccarino
 March 17, 2024
 Flexible Flyers Agility
 Honey Brook, PA

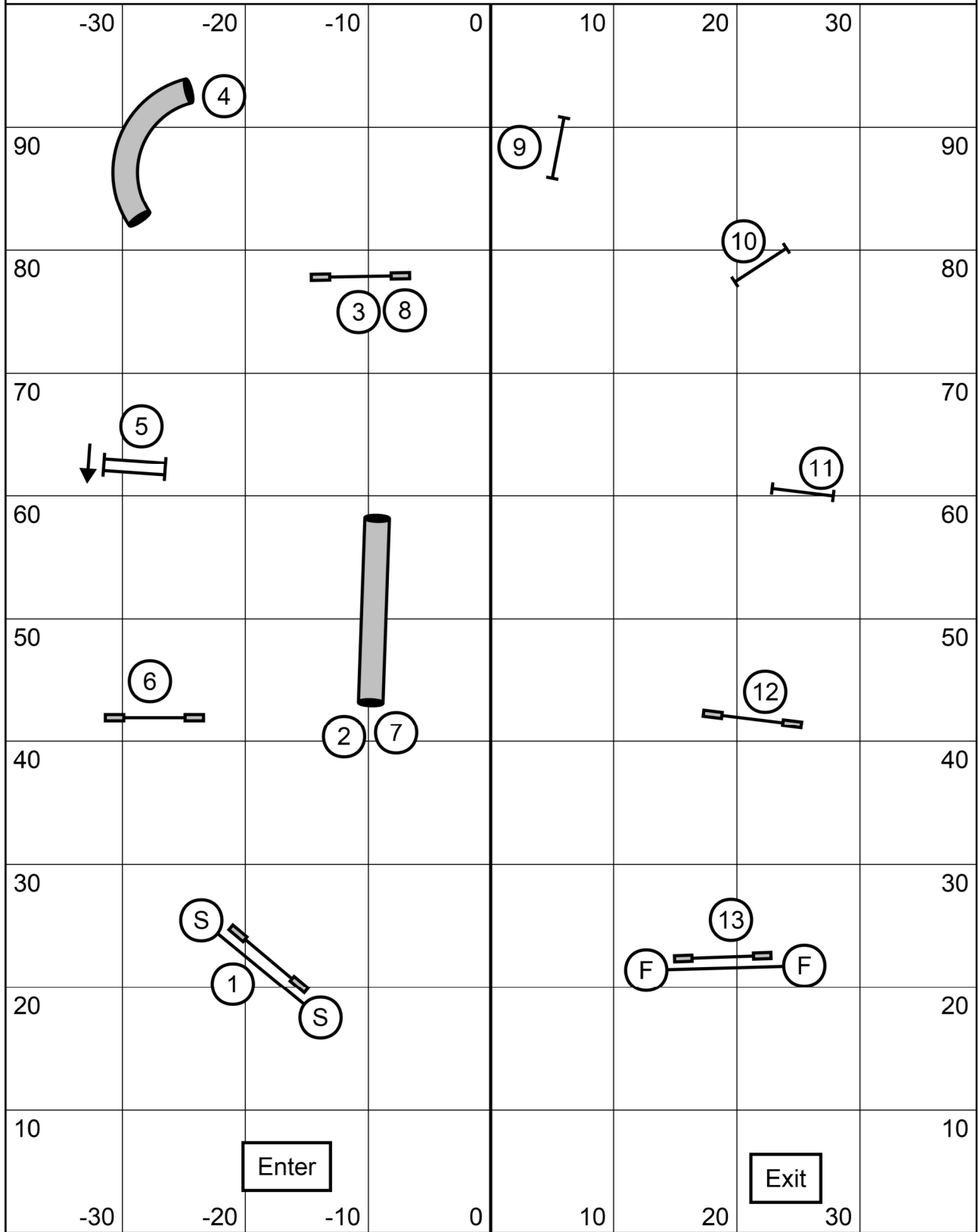
Jumpers 3, 5 & C



Next dog in at
obstacle #14

Jumpers Levels 3, 5 & C
 Judged by: Joyce Yaccarino
 March 17, 2024
 Flexible Flyers Agility
 Honey Brook, PA

Jumpers 1 & 2



Next dog in at
obstacle #12

Jumpers Levels 1 & 2
 Judged by: Joyce Yaccarino
 March 17, 2024
 Flexible Flyers Agility
 Honey Brook, PA